

Rules for Tool Swap

Bring your gently used garden tools, pots, garden decorations, bird feeders and houses, gardening and plant books, seed packets, or plants to swap them for something new. Make sure these items are in working condition and thoroughly cleaned before bringing them to the swap!

You may bring items to swap, but you can also just come and pick up items if you're in the market for some garden tools. All items are meant to be given and taken freely; they are not for sale. This event will repurpose old, unused garden tools and other outdoor items and give them new homes, helping to divert waste from going to the landfill incinerators.

DO NOT BRING any chemicals, fertilizers, pesticides, weed killers, plastic planter pots, broken or unusable items, live animals, or any used soil from your garden. If you bring seeds to the swap please make sure they are no more than two years old!

Drop off your items between **8am and 12pm** with one of our event staff at the **northeast corner** of the MU Health Care Pavilion (See map below!)

Questions? Email info@columbiaurbanag.org



USED TOOL SWAP RULES!

Items to bring!



Garden Tools



Pots & Garden Decor



Seed Packets & Plants



Bird Feeders & Houses



Plant Books

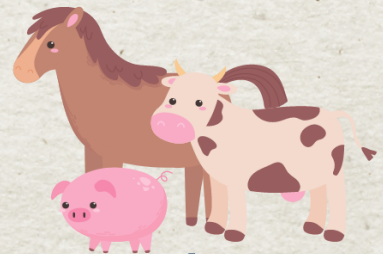
Items NOT to bring!



Chemicals/
Fertilizers/
Pesticides/
Weed Killer



Plastic Pots



Live Animals



Used-Soil



Broken Items

DROP OFF / UNLOADING ZONE

- **NORTH SIDE ONLY**
- **DROP OFF BEGINS AT 8AM**
- **WAIT FOR A VOLUNTEER TO UNLOAD.**
- **VOLUNTEERS WILL HAVE FINAL SAY ON WHAT IS OR ISN'T ALLOWED TO BE DROPPED OFF.**
- **UNALLOWED ITEMS:**
 - **CHEMICALS, FERTILIZERS, PESTICIDES, WEED KILLERS, PLASTIC PLANTER POTS, BROKEN OR UNUSABLE ITEMS, LIVE ANIMALS, OR ANY USED SOIL FROM YOUR GARDEN**
 - **AFTER YOU ARE DONE UNLOADING, MOVE YOUR VEHICLE OUT OF THE UNLOADING ZONE.**

PICK UP / LOADING ZONE

- **SOUTH SIDE ONLY**
- **PICKUP BEGINS AT 10AM**
- **FIRST COME, FIRST SERVED. THERE ARE NO HOLDS, MARKING, OR TAGGING ITEMS. THE FIRST PERSON TO CARRY AN ITEM INTO THEIR VEHICLE OWNS IT.**
- **AFTER YOU ARE DONE LOADING YOUR VEHICLE, MOVE IT OUT OF THE LOADING ZONE.**